

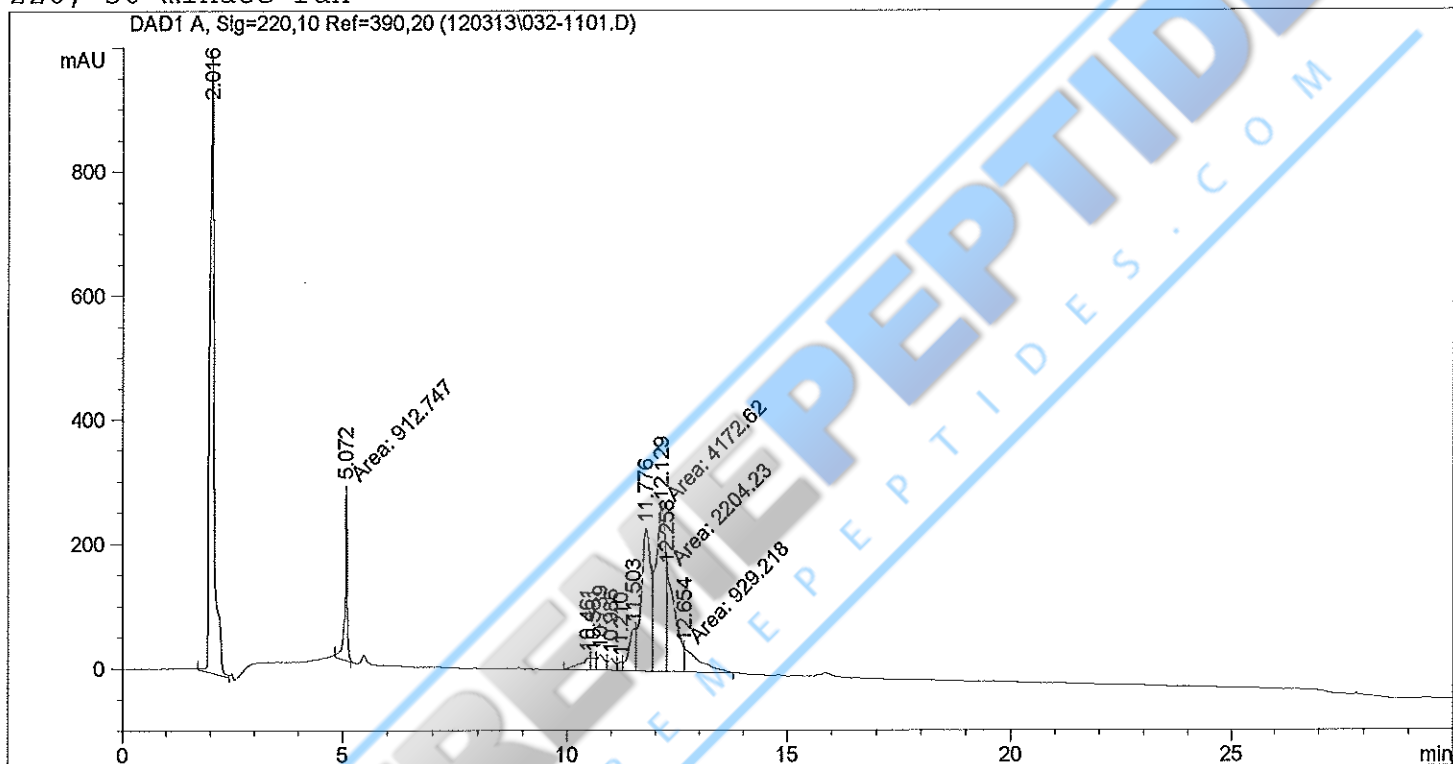
```

=====
Injection Date   : 12/3/13 11:19:48 PM           Seq. Line :   11
Sample Name     : IGF-1 Des 1,3                 Vial      :   32
Acq. Operator   : Jinny Johnson                 Inj       :    1
                                                Inj Volume: Inj prog

Acq. Method     : C:\HPCHEM\1\METHODS\PEPT25Z.M
Last changed    : 12/3/13 5:06:16 PM by Jinny Johnson
Analysis Method : C:\HPCHEM\1\METHODS\PEPT25Z.M
Last changed    : 12/4/13 12:08:15 PM by Jinny Johnson
                  (modified after loading)

Pept25z.m: , 25 ul injection, PMT of 11, 30 min run, excite at 280/350 UV
220, 30 minute run

```



```

=====
                          Normalized Percent Report
=====

```

```

Sorted By      : Signal
Multiplier    : 1.0000
Dilution      : 1.0000
Sample Amount  : 1.00000 [nmoles] (not used in calc.)

```

Signal 1: DAD1 A, Sig=220,10 Ref=390,20

```

=====
                          Area Percent Report
=====

```

```

Sorted By      : Signal
Multiplier    : 1.0000
Dilution      : 1.0000
Sample Amount  : 1.00000 [nmoles] (not used in calc.)

```

Signal 1: DAD1 A, Sig=220,10 Ref=390,20

Peak #	RetTime [min]	Type	Width [min]	Area [mAU*s]	Height [mAU]	Area %
1	2.016	BV	0.0915	6887.41699	990.47992	33.7965
2	5.072	MM	0.0540	912.74658	281.94928	4.4788
3	10.461	BV	0.2106	326.10007	20.12977	1.6002
4	10.581	VV	0.1069	155.07672	20.43305	0.7610
5	10.739	VV	0.1546	289.65231	24.51859	1.4213
6	10.986	VV	0.1340	201.87874	19.05408	0.9906
7	11.210	VV	0.1035	105.95432	14.51846	0.5199
8	11.503	VV	0.1704	757.00671	68.12723	3.7146
9	11.776	VV	0.2149	3437.18872	229.29968	16.8662
10	12.129	MF	0.2609	4172.61963	266.58844	20.4750
11	12.258	MF	0.1656	2204.23413	164.91026	10.8162
12	12.654	FM	0.3969	929.21814	39.02456	4.5597

Totals : 2.03791e4 2139.03331

Results obtained with enhanced integrator!

*** End of Report ***



EXTREME PEPTIDES[®]
WWW.EXTREMEPEPTIDES.COM