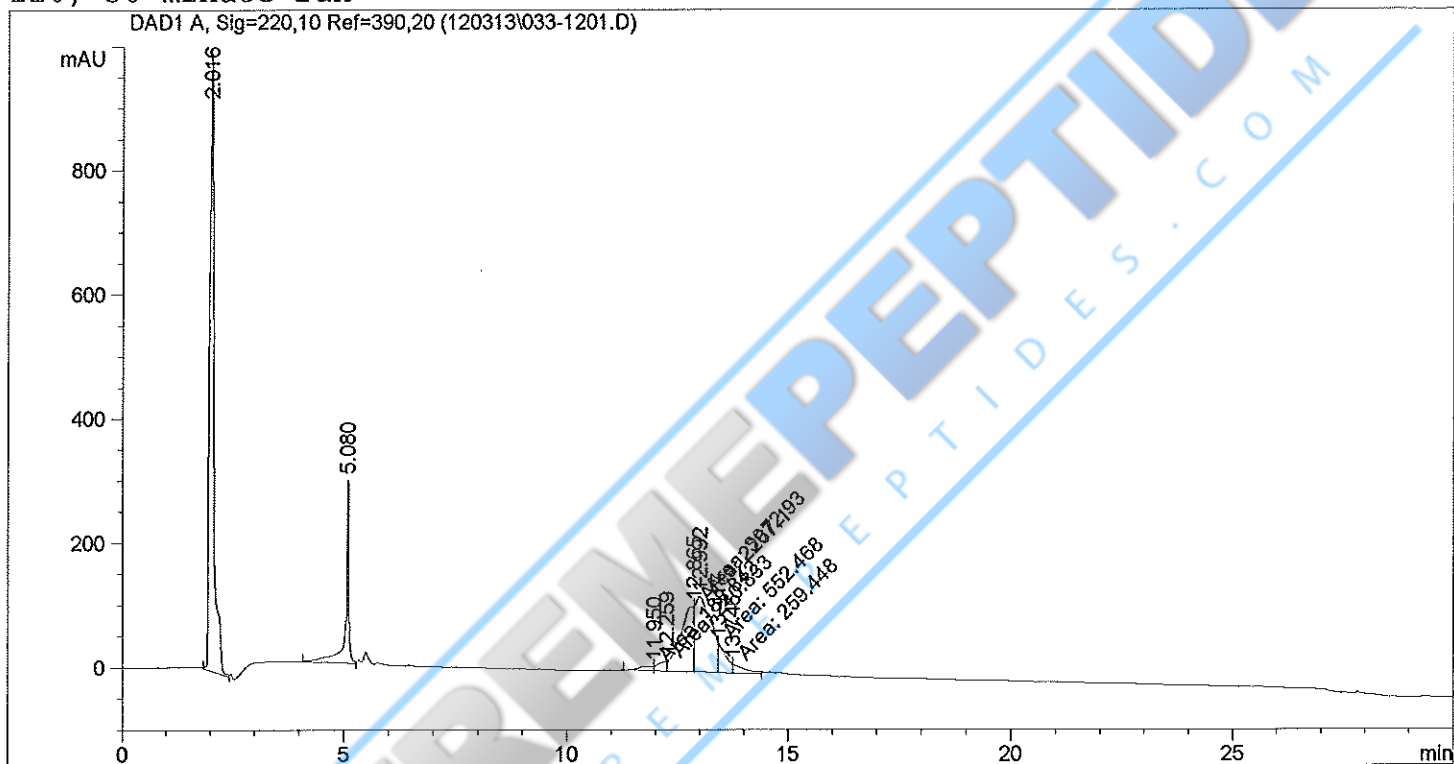


```

=====
Injection Date   : 12/3/13 11:58:51 PM           Seq. Line  : 12
Sample Name     : IGF-1 LR3                     Vial       : 33
Acq. Operator   : Jinny Johnson                 Inj        : 1
                                                    Inj Volume : Inj prog

Acq. Method     : C:\HPCHEM\1\METHODS\PEPT25Z.M
Last changed    : 12/3/13 5:06:16 PM by Jinny Johnson
Analysis Method : C:\HPCHEM\1\METHODS\PEPT25Z.M
Last changed    : 12/4/13 12:08:15 PM by Jinny Johnson
                  (modified after loading)
    
```

Pept25z.m: , 25 ul injection, PMT of 11, 30 min run, excite at 280/350 UV
 220, 30 minute run



Normalized Percent Report

```

Sorted By      : Signal
Multiplier    : 1.0000
Dilution      : 1.0000
Sample Amount  : 1.00000 [nmoles] (not used in calc.)
    
```

Signal 1: DAD1 A, Sig=220,10 Ref=390,20

Area Percent Report

```

Sorted By      : Signal
Multiplier    : 1.0000
Dilution      : 1.0000
Sample Amount  : 1.00000 [nmoles] (not used in calc.)
    
```

Signal 1: DAD1 A, Sig=220,10 Ref=390,20

Peak #	RetTime [min]	Type	Width [min]	Area [mAU*s]	Height [mAU]	Area %
1	2.016	BB	0.0914	6931.33496	997.85626	46.5047
2	5.080	BV	0.0624	1391.64160	294.39307	9.3370
3	11.950	MF	0.3967	188.84248	7.93375	1.2670
4	12.259	FM	0.2449	240.83327	16.38854	1.6158
5	12.865	MF	0.3571	2267.10425	105.79726	15.2108
6	12.992	MF	0.4220	3072.92847	121.37125	20.6173
7	13.417	MF	0.1950	552.46844	47.22256	3.7067
8	13.746	FM	0.3169	259.44836	13.64720	1.7407

Totals : 1.49046e4 1604.60990

Results obtained with enhanced integrator!

*** End of Report ***

